



SMITHFIELD POLICE DEPARTMENT

ANNUAL REPORT

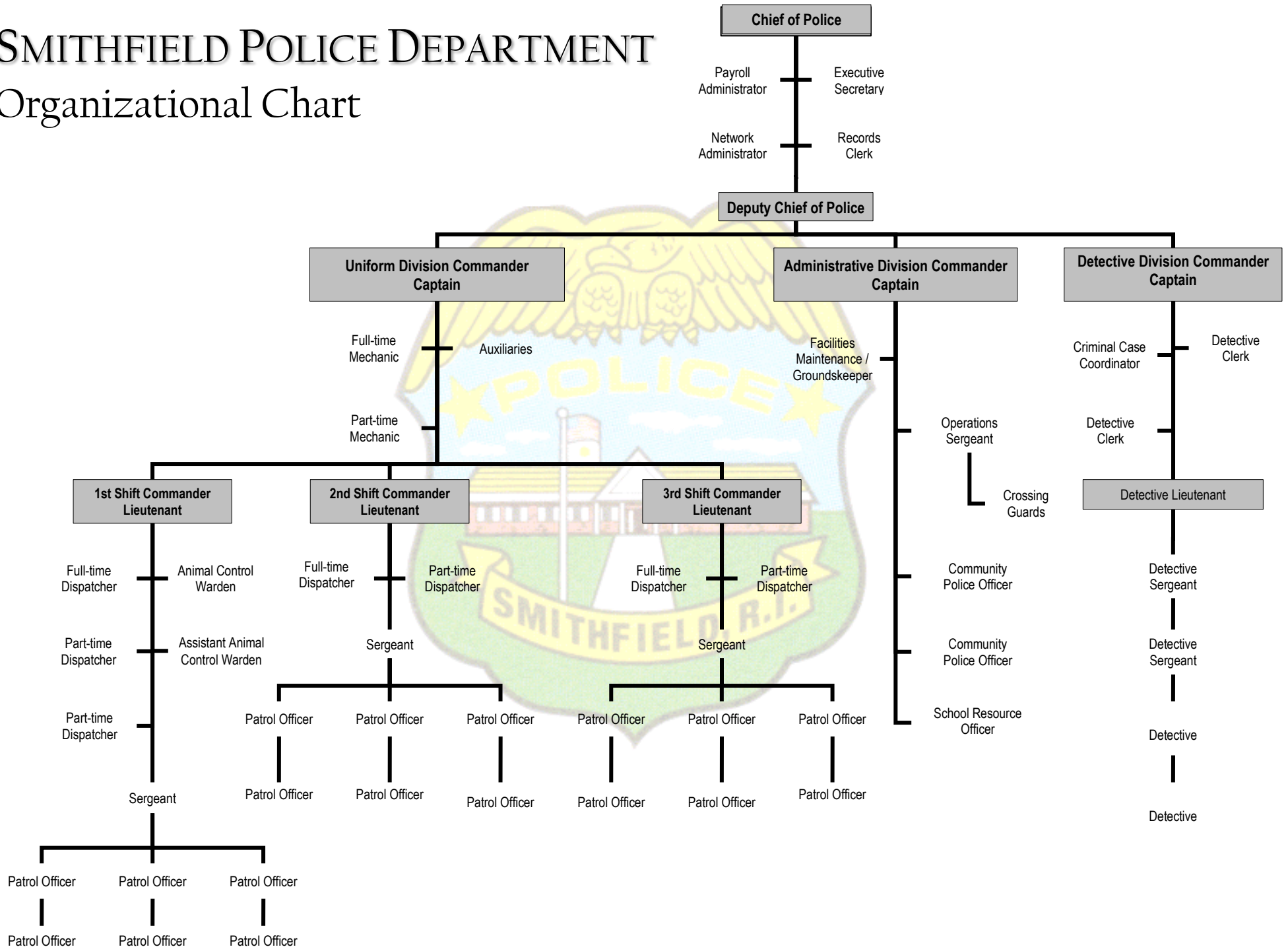
2015 - 2016



To obtain information throughout the year, please visit us at www.SmithfieldPD.com or like us on facebook www.facebook.com/SmithfieldPolice.

SMITHFIELD POLICE DEPARTMENT

Organizational Chart





Smithfield Police Department

215 Pleasant View Avenue
Smithfield, Rhode Island 02917
Tel: (401) 231-2500
Fax: (401) 233-1018

Richard P. St.Sauveur, Jr.
Chief of Police

October 31, 2016

Mr. Dennis G. Finlay
Town Manager
Smithfield Town Hall
64 Farnum Pike
Smithfield, RI 02917

Dear Town Manager Finlay:

It is my distinct pleasure to submit to you, Smithfield Police Department's Annual Report for FY 2015-2016.

I am pleased with the accomplishments and progress summarized within this publication. Furthermore, I trust that you, along with Town Council members, residents, and business owners of Smithfield, will find this report to be informative and a fair representation of the dedication and commitment to service that the sworn and civilian members of the Smithfield Police Department exhibit on a daily basis.

Sincerely yours,

Richard P. St. Sauveur, Jr.
Chief of Police

RPS/lad

A Nationally Accredited Agency

This page has intentionally been left blank.

VISION STATEMENT

The vision of the Smithfield Police Department is to be recognized as the most professional, well-respected, highly-trained, proactive, community-oriented law enforcement agency in Rhode Island.

MISSION STATEMENT

The mission of the Smithfield Police Department is to establish and maintain a proactive partnership with residents and business owners to work together in solving problems facing our community. The success of this mission depends upon a continuous effort to increase awareness and develop higher levels of trust and understanding among police officers and their community.

In furthering this partnership, we pledge our dedication and diligence in protecting life, liberty and property; preserving the peace; and enforcing laws and ordinances. We are committed to improving all aspects of public safety, reducing the fear and incidence of crime, extending and improving our community programs, and maintaining the highest degree of respect for individual rights and human dignity. We are committed to honoring the sacred public trust by ensuring that the Smithfield Police Department adheres to the highest professional law enforcement standards. We shall continuously strive toward attaining excellence, removing barriers to communication, and providing our employees with effective leadership, supervision and training in a quality work environment.

ACCREDITATION



In 1998, the Smithfield Police Department made a voluntary commitment to pursue national accreditation status under the Commission on Accreditation for Law Enforcement Agencies, Inc. (CALEA). Accreditation provides law enforcement agencies an opportunity to demonstrate that they meet a set of nationally recognized, professional standards, currently 484 in number, which help to strengthen crime prevention programs, formalize essential management procedures, and establish fair and nondiscriminatory practices. During this initial accreditation process, the Accreditation Unit was responsible for the development, implementation, and updating of policies and procedures, to meet or exceed CALEA standards. The Department attained national accreditation status in March of 2001 and was reaccredited in 2004, 2007, 2010, 2013, and 2016.

To maintain its reaccredited status, and to be eligible for reaccreditation in March of 2020, the Department must remain in compliance with all applicable standards, meet any new or revised standards set forth by the Commission, and undergo a seventh on-site assessment in November, 2019. Such compliance, as monitored, documented and reported (to CALEA) by the Department's Accreditation Manager, ensures that the Smithfield Police Department is meeting or exceeding the highest and most current law enforcement standards in the nation.

FISCAL YEAR 2015 – 2016 ACHIEVEMENTS

1. In late November, the Department began its long awaited renovation & expansion project. As a result of a mild winter, construction workers were able to complete a lot of work which was originally thought to have to wait until the spring. It is anticipated that the project will be finished by early spring of 2017. The newly renovated and expanded police headquarters will include upgraded locker room facilities for male and female officers, ADA compliant restroom facilities for employees and the general public, an expanded lobby, dispatch center, and records division, a 50-seat meeting & training room, and increased space for evidence and property.
2. Provided an average of 35.5 hours of in-service training to all sworn officers. Training topics included: Spring & Fall Firearms Qualifications, Shotgun & Patrol Rifle Proficiency, Fire Suppression, Report Writing, and Human Trafficking.
3. Pursued and awarded the following grants:

Click It Or Ticket	\$ 3,000
Child Passenger Safety	\$ 10,825
Blue Riptide (Speed)	\$ 5,000
Blue Riptide (DUI)	\$ 5,000
RIBHDDH Tobacco	\$ 1,000
4. In furthering the Department's Written Directive System, 3 policies were revised. They were: VIN Foreign State Title Inspections, Traffic Enforcement Procedures, and Military Deployment & Reintegration.
5. Continued to aggressively identify drunk drivers, making 74 drunk driving arrests.
6. Continued to maintain Facebook and Twitter accounts to establish additional avenues of communication with residents and businesses.
7. Continued the 4th Annual Buckle Up Shuffle at Smithfield High School
8. Continued the Department's Commercial Enforcement Unit to improve roadway safety and address violations associated with large, commercial vehicles.

BUDGET

Fiscal Year 2015-2016

Ammunition	\$ 7,300
Annual Leave	\$ 100,464
Building Maintenance	\$ 23,000
Building Renovations	\$ 25,500
Clothing & Cleaning	\$ 77,023
Community Policing	\$ 8,000
Compensatory Time	\$ 276,640
Computer Supplies	\$ 32,140
Dues & Conferences	\$ 6,180
Education	\$ 44,886
Electric	\$ 27,911
Office Equipment Maintenance	\$ 21,218
Gas & Oil	\$ 116,699
Heating Fuel	\$ 8,652
Holidays	\$ 152,856
Longevity	\$ 255,582
Office Supplies/Miscellaneous	\$ 15,000
Overtime	\$ 117,990
Part-Time	\$ 56,159
Police Supplies	\$ 41,056
Postage	\$ 5,200
Printing & Reproduction	\$ 3,150
Radio	\$ 18,000
Sick Leave	\$ 77,532
Special Services	\$ 3,000
Telephone	\$ 37,801
Tires	\$ 6,500
Tools	\$ 875
Training	\$ 31,200
Vehicle Maintenance	\$ 20,000
Wages & Salary	\$ 3,290,632
TOTAL	\$4,908,146

COMMUNITY POLICING PROGRAMS

The Community Policing Unit is responsible for the following programs:

D.A.R.E. ELEMENTARY SCHOOL PROGRAM - The Drug Abuse Resistance Education (*D.A.R.E.*) Elementary School Program teaches students about the harmful effects of alcohol, drug abuse, and bullying, and increases their self-esteem by showing positive alternatives of ways to say no to alcohol, drugs and violence. The fifth grade curriculum is an 18-week program with visitations to other grades.

D.A.R.E. MIDDLE SCHOOL PROGRAM - The *D.A.R.E.* Middle School Program reinforces what the students have learned in the fifth grade *D.A.R.E.* Program. It also focuses on how to avoid potentially violent situations and relationships. This program teaches students the six universally accepted characteristics needed to promote a high self-esteem and strong character as they become young adults in the community.

SCHOOL RESOURCE OFFICER PROGRAM - In April of 2002, the United States Department of Justice Office of Community Oriented Policing Services announced the availability of federal funds to deploy sworn School Resource Officers (SRO) as part of an overall plan to address school related crime through community policing. The Smithfield Police Department received a grant award of \$125,000 and selected its first SRO. Following a mandatory training period, the first SRO was assigned to the Smithfield High School in the fall of 2003, and has remained an integral part of the school ever since.

SENIOR CITIZEN ADVOCACY - The Community Police Officers serve as the Department's Senior Citizen Advocates. They work closely with the Smithfield Senior Center, Department of Elderly Affairs (DEA) and senior citizens in the community. They assist in the investigations of elderly abuse and elderly self-neglect. They also alert senior citizens of on-going scams and distribute literature explaining ways to protect themselves from crimes.

LAW ENFORCEMENT EXPLORERS, SMITHFIELD POST 17 - The Law Enforcement Explorer Post is a program sponsored by Boy Scouts of America for young men and women, ages 14 – 21. The purpose of the Explorer program is to educate and involve youths in police operations and to interest them in a future career in law enforcement. The Smithfield Explorers meet monthly, are very involved in community service projects, and give back many hours of their time to the town.

RHODE ISLAND LAW ENFORCEMENT EXPLORER ACADEMY: Several of our Smithfield Explorers took part in the RI Explorer Academy, which is a one-week quasi-military style academy that gives them a feel of what recruits experience in the police academy. Smithfield Explorers joined other law enforcement posts from throughout the State at the *Camp Varnum* in Narragansett, RI. These dedicated young men and women survived 5:00 a.m. physical training regiments, intense classroom training, and went through a week-long simulated police academy that tested them physically and mentally. They received some of the best police training from officers and civilians representing different departments around the State.

COMMUNITY POLICING PROGRAMS

SMITHFIELD SUBSTANCE ABUSE PREVENTION COALITION - The Police Department works closely with the *Smithfield Substance Abuse Prevention Coalition*. The coalition conducts substance abuse prevention programs and meets monthly at the Smithfield High School. The Department assigns members of the community policing unit to serve on the coalition. The department has greatly benefited from this partnership and has received several grants, which are administered by *Tri-Town Community Action*.

ALCOHOL SERVER TRAINING PROGRAM - The Community Police Officers have been certified as alcohol server training instructors, and are available to provide training to local liquor establishments. Consistent with Rhode Island General Laws, all persons who sell or serve alcoholic beverages, anyone serving in a supervisory capacity over those who sell or serve alcoholic beverages, anyone whose job description entails the checking of identification for the purchase of alcoholic beverages and valet parking staff must receive such training every three (3) years.

CAR SEAT INSTALLATION CLINICS - The Department's Community Policing Division frequently holds instructional clinics for parents, grandparents, and other caregivers on the proper installation of child restraint systems. These individualized clinics are by appointment only, grant-funded, and offered at no cost to residents. Our police department has four certified car seat technicians, including one *Instructor Trainer* who not only teaches others throughout the state, but also served as a spokesperson for child passenger safety in a local TV news spot.

CITIZENS POLICE ACADEMY - The Citizens Police Academy is a program that provides Smithfield residents with insight into police operations. Participants are introduced to a wide variety of the department's functions through classroom instruction and hands-on experience. This is an 8-week program that meets for two and half hours each week.

FEMALE SELF-DEFENSE PROGRAM - The Female Self-Defense Program is geared to educate participants on how to avoid being targeted and what action to take if selected as a victim; it is not intended to turn participants into martial arts experts. Participants must be Town residents or business owners and at least 18 years of age. This is a 4-week program which meets for two hours, each week.

LEADERSHIP ACADEMY - The Smithfield Leadership Academy is the result of an ongoing partnership between the police department and the school department aimed at Smithfield youths. By providing them with guidance and support to become successful adults, the goal of the academy is to teach students team building and leadership skills, while keeping them engaged over the summer allowing them to build a relationship with the police officers they see regularly. Students were chosen based on school recommendations and worked with the police officers for two weeks during the summer.

COMMUNITY POLICING PROGRAMS

SAFETY VISITATIONS - The Community Policing Unit routinely visits daycare facilities throughout Smithfield to provide the children with a safety lessons at various times throughout the year.

NATIONAL NIGHT OUT - The Department once again partnered with *The Crossings at Smithfield* businesses and the community to deliver another fun-filled “*National Night Out*” against crime. The event has proven to be an effective, inexpensive and enjoyable program to promote neighborhood spirit and police-community partnerships in our fight for a safer community.

WALK TO SCHOOL DAY – On a chose day in October, members of the Smithfield Police Department, in conjunction with the faculty and staff of Anna McCabe School and Gallagher Middle School take part in the *International Walk to School Day* - a global event where communities from over 40 countries walk and bike to school on a single day. Families, schools and communities around the globe walk and bicycle to school in celebration of this day every October. All parents are encouraged to allow their children to either walk or bike to school to help promote healthier life choices, and reduce vehicle traffic and emissions.

PRESCRIPTION DRUG TAKE BACK: The Police Department participated in several drug take-back efforts including the *National Prescription Drug Take Back Day*. The purpose of this National Take Back Day was to provide a venue for persons who wanted to dispose of unwanted and unused prescription drugs. This effort was a huge success in removing potentially dangerous prescription drugs, particularly controlled substances, from our nation’s medicine cabinets. Another very successful special event geared towards seniors was held at the Smithfield Senior Center to provide a more convenient way of disposing unused drugs.

TRICK-OR-TREAT PARADE - The Smithfield Police Department’s Community Policing Unit, in cooperation with *The Crossings at Smithfield*, held a Trick-or-Treat Parade for all the young children in Town. Approximately 1,000 people attend this event every year. Hundreds of little witches, ghosts, pirates, and princesses flood the mall for an early display of their Halloween costumes. Dozens of children first meet at Barnes & Noble for story-time, after which police escort the group from store-to-store trick-or-treating. Aside from treats, some stores offer special activities or crafts for the children. Attendees are asked to bring a non-perishable food item to benefit The Rhode Island Food Bank.

YOUTH GROUP POLICE STATION TOURS – The Smithfield Police Department routinely hosts various youth groups for personalized tours of the headquarters. Tours last about an hour and feature the front communications center, cell blocks, and viewing of our police vehicles. Tours usually end with a question and answer session that typically includes some type of safety lecture for the children and their parents.

COMMUNITY POLICING PROGRAMS

WALKING SCHOOL BUS – The Walking School Bus is a group of children walking to school with one or more adults. The “bus” follows a designated route and picks up children from stops at designated times along the route. Members of the Smithfield Police & Fire Departments “drive” the buses from three locations to walk with students and parents to school. The Walking School Bus promotes healthier life choices, reduces traffic, vehicle emissions, and gives children a chance to spend some time with some of our police and fire personnel.

LAW ENFORCEMENT TORCH RUN - Every year, Smithfield Police and Fire Department members join together for the *Special Olympics Rhode Island Torch Run*. These public safety officials donate their time (and bodies) to raise money for S.O.R.I. They run and bike from Smithfield to the State House. The RI Police-Fire-Corrections Torch Run is part of an international campaign for Special Olympics coordinated and managed by all divisions of law enforcement officers, fire fighters and corrections officers throughout the State. Its mission is to raise dollars and awareness of the Special Olympics movement.

M.A.D.D. RI Team Spirit: The Smithfield Police Department’s Community Policing Unit, for the second year in a row, participated in *M.A.D.D. Rhode Island's Team Spirit Conference* at Bryant University. This conference promotes the prevention of alcohol and drug use by youths. The conference provides students and their advisors with the motivation, information, skills, and support necessary to organize alcohol and drug free events and activities in their schools and communities.

D.A.R.E. 5th GRADE SKATING PARTY – As an extension of the *D.A.R.E.* elementary school program, fifth-graders are treated to a skating party just for them. The skating party includes light refreshments, prizes, music and more. This is a great chance for youths to mingle with students from other schools who they will soon be seeing again in a few months at middle school.

SPECIAL OLYMPICS TORCH RUN PLUNGE: Members of the police department dove into the cold waters of Goddard Park, and helped raise thousands of dollars for Special Olympics Rhode Island. Special Olympics Rhode Island is devoted, year-round, to sports training and competition for children and adults with intellectual disabilities. The Smithfield Police Department proudly supports these activities throughout the year.

To learn more about any of these programs, please contact the Community Policing Unit at 231-2500, ext. 202, check us out at www.facebook.com/smithfieldpolice or visit www.smithfieldpd.com.

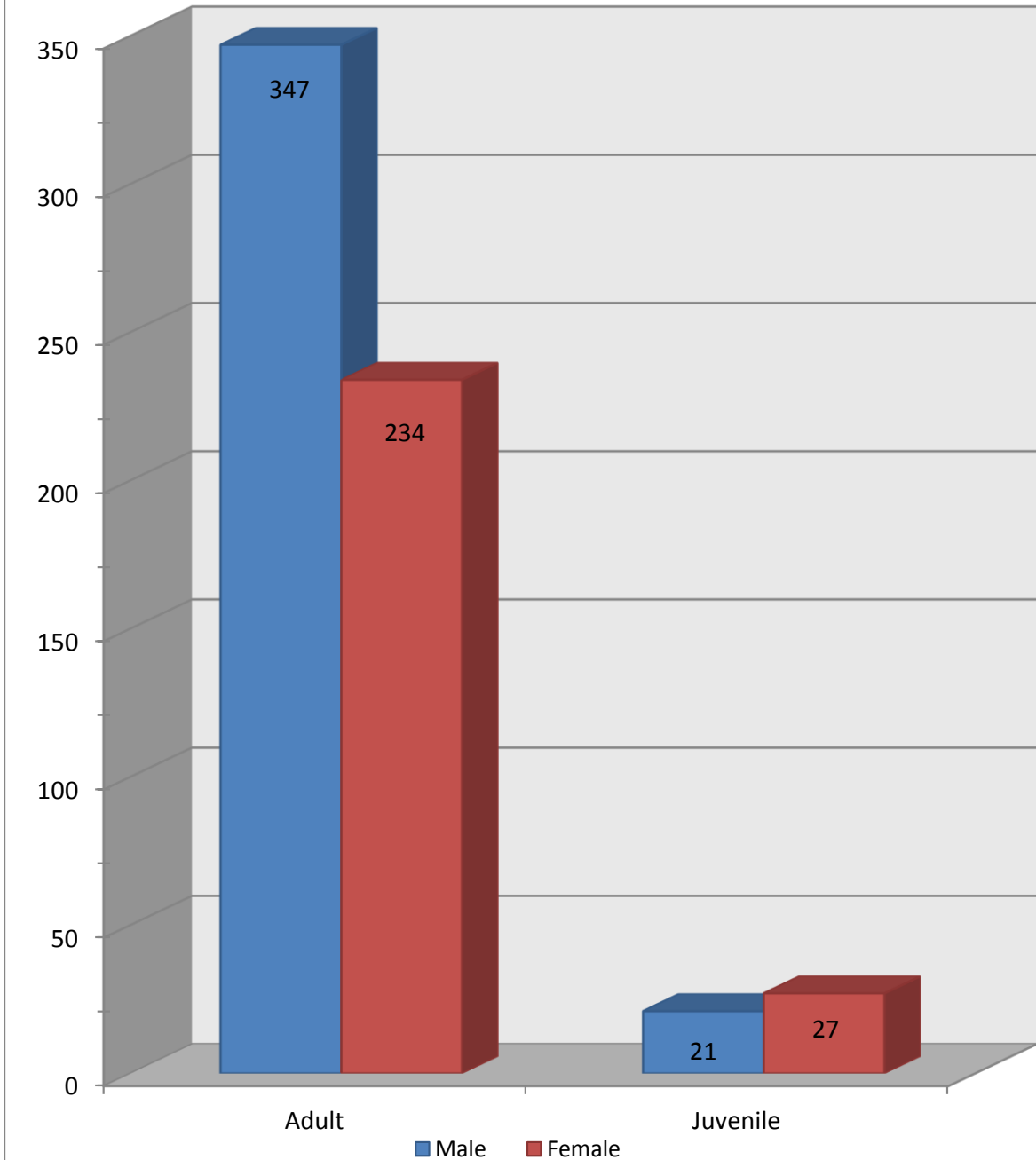
CRIME STATISTICS (2015)

Description	Glocester	No. Smithfield	Smithfield	Lincoln	Johnston	No. Prov.
HOMICIDE MURDER/NONNEG MANSLAUGHTER	0	0	0	0	0	1
HOMICIDE NEGLIGENT MANSLAUGHTER	0	0	0	0	0	0
HOMICIDE JUSTIFIABLE	0	0	0	0	0	0
KIDNAPPING/ABDUCTION	0	0	0	0	0	3
SEX OFFENSE FORCE RAPE	0	1	4	2	3	9
SEX OFFENSE FORCE SODOMY	2	0	0	0	0	0
SEX OFFENSE FORCE OBJECT	1	1	1	1	0	1
SEX OFFENSE FORCE FONDLING	0	3	2	4	4	2
ROBBERY	0	2	2	4	9	3
ASSAULT AGGRAVATED	1	3	6	8	29	36
ASSAULT SIMPLE	33	46	62	87	107	195
ASSAULT INTIMIDATION	0	1	3	7	8	19
ARSON	1	0	0	3	3	3
EXTORTION/BLACKMAIL	0	0	1	0	0	0
BURGLARY/BREAKING AND ENTERING	11	12	38	39	85	93
LARCENY POCKET-PICKING	0	0	0	2	0	0
LARCENY PURSE-SNATCHING	0	0	0	0	0	0
LARCENY SHOPLIFTING	2	94	84	29	28	70
LARCENY FROM BLDG	5	10	0	25	29	61
LARCENY FROM COIN OPERATED MACHINE	0	0	0	0	1	0
LARCENY FROM MV	13	10	3	71	62	49
LARCENY AFFIXED MV PARTS/ACCESSORIES	19	3	0	6	49	51
LARCENY ALL OTHER	0	42	109	217	115	30
MOTOR VEHICLE THEFT	0	7	6	35	33	33
COUNTERFEITING/FORGERY	1	2	5	8	9	7
FRAUD FALSE PRETENSES	2	9	15	38	44	26
FRAUD CREDIT CARD/AUTOMATIC TELLER MACHINE	0	2	11	18	17	17
FRAUD IMPERSONATION	0	2	0	0	1	6
FRAUD WELFARE	0	0	0	0	0	0
FRAUD WIRE	0	0	0	0	1	0
EMBEZZLEMENT	1	9	9	5	7	8
STOLEN PROPERTY OFFENSES	16	3	2	10	12	6
DESTRUCTION/DAMAGE/VANDALISM	14	45	81	171	113	169
DRUG/NARCOTIC VIOLATION	0	16	68	28	21	85
DRUG/NARCOTIC EQUIPMENT	0	0	0	0	0	0
SEX OFFENSE NON FORCE INCEST	0	0	0	0	0	0
SEX OFFENSE NON FORCE STATUTORY	1	1	0	1	1	0
PORNOGRAPHY/OBSCENE MATERIAL	0	0	0	0	0	0
GAMBLING BETTING/WAGERING	0	0	0	0	0	0
GAMBLING OPERATE/PROMOTING/ASSISTING	0	0	0	0	0	1
GAMBLING EQUIPMENT VIOLATIONS	0	0	0	0	0	0
GAMBLING SPORTS TAMPERING	0	0	0	0	0	0
PROSTITUTION ENGAGING	0	0	0	0	0	0
PROSTITUTION ASSISTING/PROMOTING	0	0	0	0	0	1
BRIBERY	0	0	0	0	0	0
WEAPON LAW VIOLATIONS	3	4	4	11	20	16
Total	126	328	516	830	811	1001

Data Source: <http://risp.ri.gov/documents/UCR/2015.pdf>

ARRESTS

FY 2015 - 2016
ADULT & JUVENILE ARRESTS BY GENDER
(629 Total Arrests)



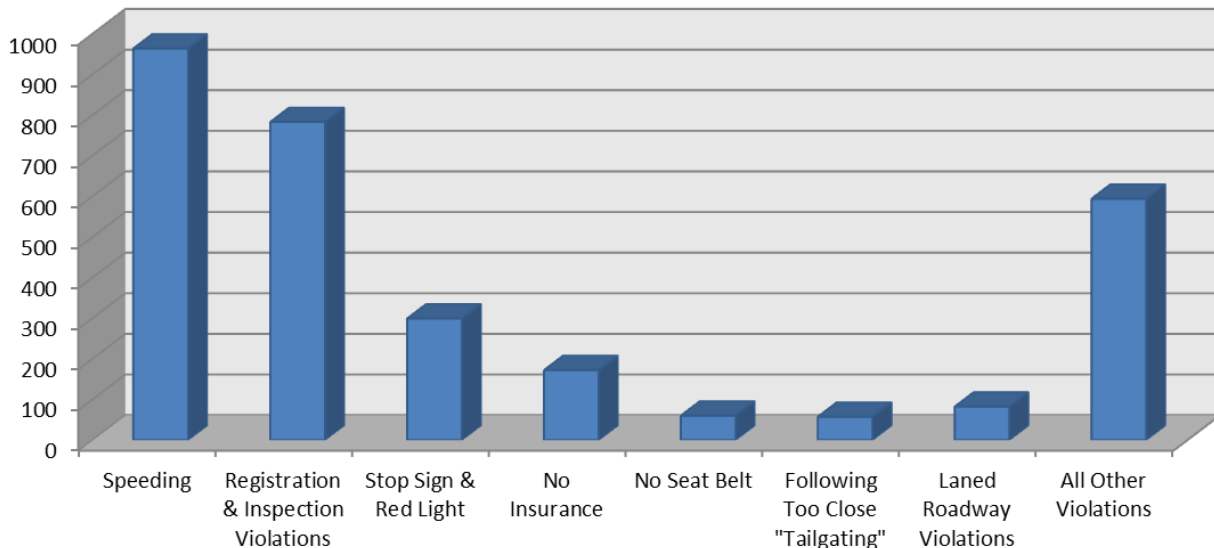
DELIVERY OF TRAFFIC SERVICES

The goal of the Smithfield Police Department's Traffic Services Program is to promote the safe, orderly and expeditious flow of vehicular and pedestrian traffic, and deliver traffic-related services designed to reduce the number of traffic collisions. The Department's Uniform Division enforces traffic laws in a consistent and courteous manner to foster a positive public image, while providing all necessary police traffic-related services. Additionally, the Department enjoys a close working relationship with the Rhode Island Department of Transportation and the State Traffic Commission, along with the Smithfield Department of Public Works and the Town Traffic Safety Commission. These relationships promote close coordination and cooperation, which are essential to the maintenance of a safe and effective highway system.

The Smithfield Town Traffic Safety Commission was established pursuant to Section 13-16 of the Smithfield Code of Ordinances. The Commission consists of a member of the Smithfield Town Council, a member selected by the Town Council, as well as designees from the Police Department, the Fire Department, and the Department of Public Works. The Commission handles complaints and suggestions concerning traffic control devices, parking regulations and deficiencies in the town roadways located within the Town of Smithfield. The Commission also makes referrals to the State Traffic Commission relating to the State roadways within the Town of Smithfield. Department members provided testimony at public hearings during the past fiscal year.

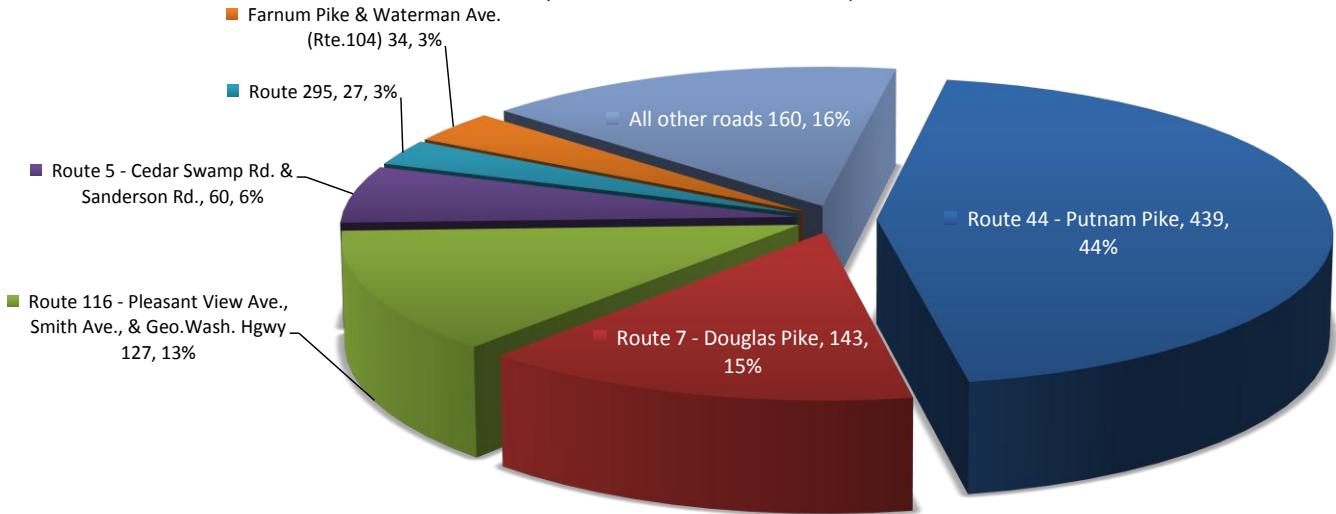
The Department continues to use its Speed Monitoring Radar Trailer and Variable Messaging Sign to raise motorists' awareness of their speed and to convey other important safety messages. The Department deploys these units on a daily basis in various areas of the town. The Department maintains ongoing covert traffic enforcement operations with its unmarked police cruiser, and continues to participate in regional and national campaigns that specifically target speeding, drunk-driving, safety belts usage, and texting while driving.

MOST COMMON TRAFFIC VIOLATIONS (2954 Total Violations Cited)



TRAFFIC COLLISIONS & ENFORCEMENT EFFORTS

Most Common Traffic Collision Areas (990 Total Collisions)



DRIVING UNDER THE INFLUENCE (DUI) ARRESTS BY MONTH (74 Total Arrests)

